

RBM可調式單刃粗搪刀系列 《正搪孔範圍Ø18 - Ø204mm, 反搪孔範圍Ø20 - Ø214mm》

Indexable RBM Single-Bit Rough Boring Head Series 《Forward Boring Range from Ø18 - Ø204mm, Reverse Boring Range from Ø20 - Ø214mm》

特性說明

1. RBM可調式單刃粗搪刀適用於粗切削搪孔。
2. 內藏式水孔，刀尖直接冷卻，刀片壽命長。
3. 刀片座由齒形結合結構固定，切削穩定，加工範圍廣泛。
4. 更換刀片座即可進行正向或反向搪孔加工。

FEATURES

1. Indexable RBM single-bit rough boring head is applied to rough boring machining.
2. Built-in coolant nozzle cool the tip, good for insert's use.
3. The toothed construction of insert holder provide high stability for cutting and wide working range.
4. Exchangeable insert holder provide easy exchange of forward and reverse boring.



RBM55-SP55



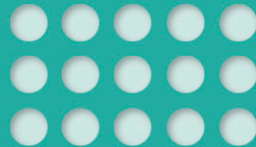
RBM55-SA55



RBM18A-SP18



RBM68-CB150-RCM100-SP100



正搪搪刀 Forward Boring

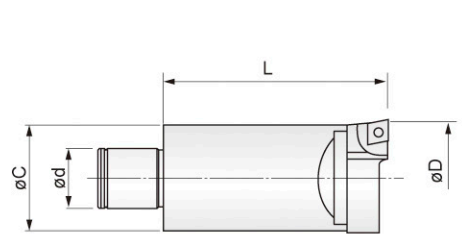


Fig.1

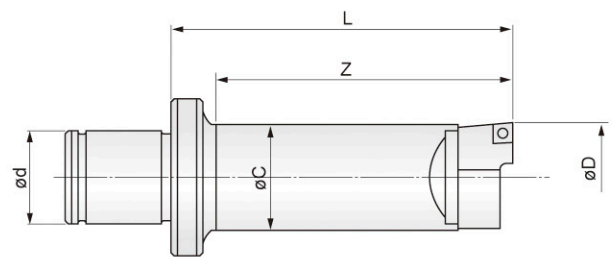


Fig.2

反搪搪刀 Reverse Boring

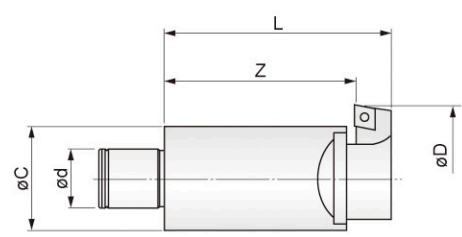
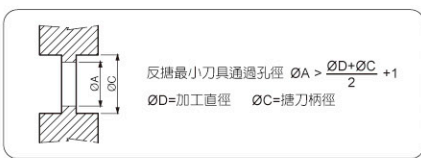


Fig.1

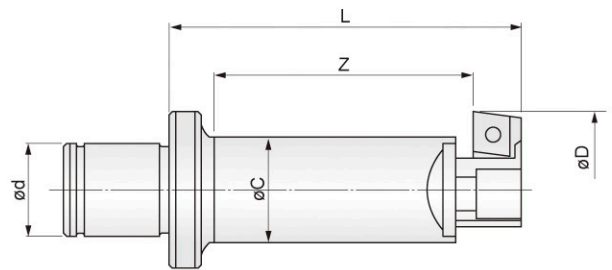
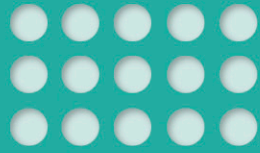


Fig.2

規格 Specifications:

搪頭型號 Boring Head No.	樣式 Fig	接合 型號 LBK No.	ϕC (mm)	ϕd (mm)	正搪 Forward Boring			反搪 Reverse Boring				刀片規格/螺絲/扳手 Insert/Clamp Screw/ Wrench	重量 (kg) Weight						
					刀片座 Cutting Insert Holder	搪孔範圍 ϕD (mm) Boring Ranges	搪頭長度 L (mm) Length	刀片座 Cutting Insert Holder	搪孔範圍 ϕD (mm) Boring Ranges	搪頭長度 L (mm) Length	有效長 Z (mm) Length								
RBM18A	2	LBK2	16	14	SP18	18-23	60/Z50	SA18	20-25	60	40	CC06 / M2.5 / T8	0.10						
RBM18B							85/Z75			85	65		0.14						
RBM18-M10	1	M10	20	11	SP22	22-29	55	SA22	24-32	40	30	CC09/M4/T15	0.06						
RBM22		LBK1					40			40	30		0.09						
RBM27		LBK2	25	14	SP27	27-40	50	SA27	31-41	50	40	0.18							
RBM35		LBK3	32	18	SP35	35-50	65	SA35	38-52	65	50	0.38							
RBM45		LBK4	40	22	SP45	45-65	80	SA45	50-65	80	70	0.72							
RBM55		LBK5	50	28	SP55	55-80	85	SA55	60-84	85	60	70	1.14						
													SP68	68-104	95	SA68	78-115	95	1.22
	SP100												100-154	SA100					110-164
RBM68	LBK6	63	36	SP68	68-104	100	SA68	78-115	100	75	100	2.10							
												SP100	100-154	125	RCM100	160-214	125	100	2.20
												CB150	150-204						SA100

※ CB150為轉接板。 ※ RCM100為平衡塊。 ※ RBM搪頭標配為正搪SP刀片座，反搪SA刀片座為選配。
 ※ 另有CB200轉接板，加工範圍 $\phi 200 \sim \phi 254$ mm。 ※ 另有CB250轉接板，加工範圍 $\phi 250 \sim \phi 304$ mm。
 ※ CB150: Adapter plate. ※ RCM100: Balance base ※ Standard parts of SP cutting insert holder for RBM boring head; option of SA reverse cutting insert holder.
 ※ Attached with CB200 adapter plate, working range from $\phi 200 \sim \phi 254$ mm on diameter.
 ※ Attached with CB250 adapter plate, working range from $\phi 250 \sim \phi 354$ mm on diameter.



RBM可調式單刃粗搪正搪孔刀+LBK刀柄 (MAS 403BT)

Indexable RBM Single-Bit Rough Boring Head + LBK Shank (MAS 403BT)



正搪
Forward
Boring

規格 Specifications:

組合規格 Tools Connection		樣式 Fig	搪孔範圍 Boring Ranges $\varnothing D(\text{mm})$	有效長 Z (mm)	總長 Length L (mm)	刀桿長 L1 (mm)	刀桿外徑 $\varnothing D1$ (mm)	重量 (kg) Weight
搪頭型號 Type	刀桿 LBK Shank							
RBM18A-SP18	BT50-LBK2-125	3	18-23	50	185	125	39/24	4.00
RBM18B-SP18				75	210			4.04
RBM22-SP22	BT50-LBK1-115	2	22-29	80	155	115	31/19	4.09
RBM27-SP27	BT50-LBK2-125		27-40	115	175	125	39/24	4.08
RBM35-SP35	BT50-LBK3-125	1	35-50	145	190	125	31	4.48
RBM45-SP45	BT50-LBK4-115		45-65	150	195	115	39	5.02
	BT50-LBK4-145			180	225	145		5.12
RBM55-SP55	BT50-LBK5-105		55-80	145	190	105	50	5.64
	BT50-LBK5-180			220	265	180		6.64
RBM55-SP68	BT50-LBK5-105		68-104	155	200	105		5.72
	BT50-LBK5-180			230	275	180		6.72
RBM55-SP100	BT50-LBK5-105		100-154	155	200	105		5.82
	BT50-LBK5-180			230	275	180		6.82
RBM68-SP68	BT50-LBK6-95		68-104	150	195	95		64
	BT50-LBK6-170	225		270	170	8.40		
	BT50-LBK6-230	285		330	230	9.70		
	BT50-LBK6-290	345		390	290	11.0		
	BT50-LBK6-350	2	< $\varnothing 90=285$ > $\varnothing 90=405$	450	350	90/64	15.60	
RBM68-SP100	BT50-LBK6-95	1	100-154	150	195	95	64	6.70
	BT50-LBK6-170			225	270	170		8.50
	BT50-LBK6-230			285	330	230		9.80
	BT50-LBK6-290			345	390	290		11.22
	BT50-LBK6-350	2	405	450	350	90/64	15.70	
RBM68-CB150-RCM100-SP100	BT50-LBK6-95	1	150-204	175	220	95	64	7.58
	BT50-LBK6-170			250	295	170		9.38
	BT50-LBK6-230			310	355	230		10.68
	BT50-LBK6-290			370	415	290		12.08
	BT50-LBK6-350	2	430	475	350	90/64	16.58	

RBM可調式單刃粗搪正搪孔刀+LBK刀柄 (MAS 403BT)

Indexable RBM Single-Bit Rough Boring Head + LBK Shank (MAS 403BT)

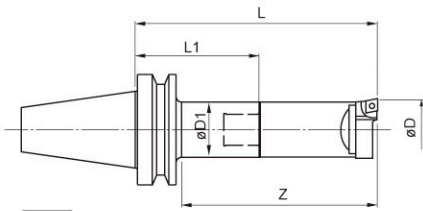


Fig.1

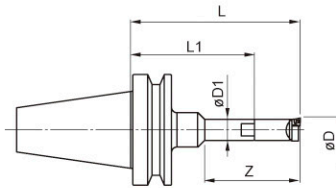


Fig.2

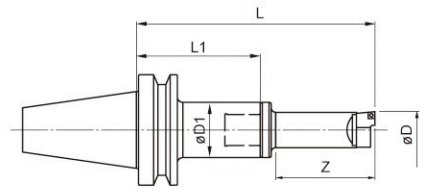


Fig.3

規格 Specifications:

組合規格 Tools Connection		樣式 Fig	搪孔範圍 Boring Ranges ØD(mm)	有效長 Z (mm)	總長 Length L (mm)	刀桿長 L1 (mm)	刀桿外徑 ØD1 (mm)	重量 (kg) Weight	
搪頭型號 Type	刀桿 LBK Shank								
RBM18A-SP18	BT30-LBK2-80	3	18-23	50	140	80	24	0.70	
RBM18B-SP18				75	165			0.74	
RBM22-SP22	BT30-LBK1-70	1	22-29	80	110	70	19	0.59	
RBM27-SP27	BT30-LBK2-80		27-40	100	130	80	24	0.78	
RBM35-SP35	BT30-LBK3-80		35-50	115	145	80	31	1.08	
RBM45-SP45	BT30-LBK4-70		45-65	120	150	70	39	1.52	
RBM55-SP55	BT30-LBK5-60		55-80	115	145	60	50	1.94	
RBM68-SP68	BT30-LBK6-60		68-104	130	160		64	3.10	
RBM18A-SP18	BT40-LBK2-85		3	18-23	50	145	85	24	1.20
RBM18B-SP18					75	170			1.24
RBM22-SP22	BT40-LBK1-75	1	22-29	80	115	75	19	1.09	
	BT40-LBK1-90			95	130			90	1.15
RBM27-SP27	BT40-LBK2-85		27-40	100	100	135	85	24	1.28
	BT40-LBK2-100				115	150			100
RBM35-SP35	BT40-LBK3-95		35-50	125	125	160	95	31	1.58
	BT40-LBK3-125				155	190			125
RBM45-SP45	BT40-LBK4-85		45-65	130	130	165	85	39	2.02
	BT40-LBK4-130				175	210			130
RBM55-SP55	BT40-LBK5-75	55-80	125	125	160	75	50	2.44	
	BT40-LBK5-125			175	210			125	3.44
RBM55-SP68	BT40-LBK5-75	68-104	135	135	170	75		2.52	
	BT40-LBK5-125			185	220			125	3.52
RBM55-SP100	BT40-LBK5-75	100-154	135	135	170	75		2.62	
	BT40-LBK5-125			185	220			125	3.62
RBM68-SP68	BT40-LBK6-65	68-104	130	130	165	65		64	3.40
	BT40-LBK6-115			180	215				115
	BT40-LBK6-165			230	265		165		6.00
RBM68-SP100	BT40-LBK6-65	100-154	130	130	165	65	3.50		
	BT40-LBK6-115			180	215		115		4.90
	BT40-LBK6-165			230	265		165		6.10
RBM68-CB150-RCM100-SP100	BT40-LBK6-65	150-204	155	155	190	65	4.38		
	BT40-LBK6-115			205	240		115	5.78	
	BT40-LBK6-165			255	290		165	6.98	

★紅字標示為高長徑比，需使用刀尖R0.2刀片，並降低轉速與進給。★The red font are in high times depth boring, please use tip R0.2 insert for machining, also reduce speed and feed.