

RBM可調式單刃粗搪刀系列 《正搪孔範圍Ø18 - Ø204mm, 反搪孔範圍Ø20 - Ø214mm》

Indexable RBM Single-Bit Rough Boring Head Series 《Forward Boring Range from Ø18 - Ø204mm, Reverse Boring Range from Ø20 - Ø214mm》

特性說明

1. RBM可調式單刃粗搪刀適用於粗切削搪孔。
2. 內藏式水孔，刀尖直接冷卻，刀片壽命長。
3. 刀片座由齒形結合結構固定，切削穩定，加工範圍廣泛。
4. 更換刀片座即可進行正向或反向搪孔加工。

FEATURES

1. Indexable RBM single-bit rough boring head is applied to rough boring machining.
2. Built-in coolant nozzle cool the tip, good for insert's use.
3. The toothed construction of insert holder provide high stability for cutting and wide working range.
4. Exchangeable insert holder provide easy exchange of forward and reverse boring.



RBM55-SP55



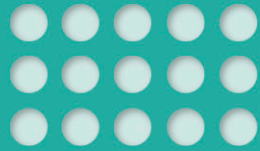
RBM55-SA55



RBM18A-SP18



RBM68-CB150-RCM100-SP100



正搪搪刀 Forward Boring

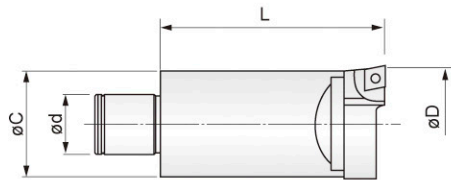


Fig.1

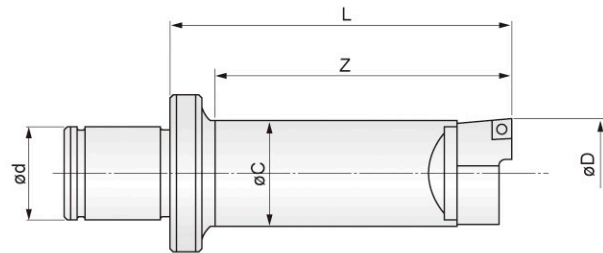


Fig.2

反搪搪刀 Reverse Boring

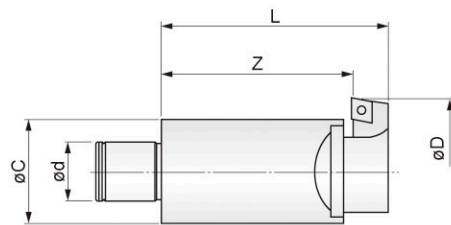
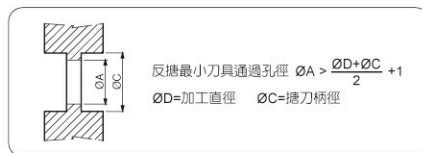


Fig.1

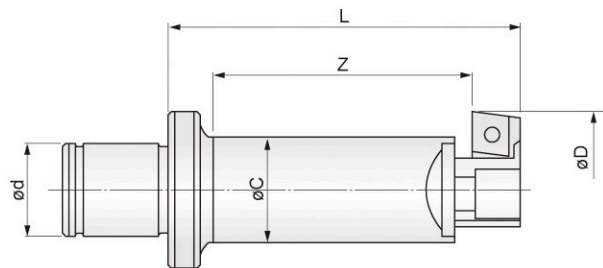


Fig.2

規格 Specifications:

搪頭型號 Boring Head No.	樣式 Fig	接合 型號 LBK No.	ϕC (mm)	ϕd (mm)	正搪 Forward Boring			反搪 Reverse Boring				刀片規格/螺絲/扳手 Insert/Clamp Screw/ Wrench	重量 (kg) Weight							
					刀片座 Cutting Insert Holder	搪孔範圍 ϕD (mm) Boring Ranges	搪頭長度 L (mm) Length	刀片座 Cutting Insert Holder	搪孔範圍 ϕD (mm) Boring Ranges	搪頭長度 L (mm) Length	有效長 Z (mm) Length									
RBM18A	2	LBK2	16	14	SP18	18-23	60/Z50	SA18	20-25	60	40	CC06 / M2.5 / T8	0.10							
RBM18B							85/Z75			85	65		0.14							
RBM18-M10							M10			M10	55		55	45	0.06					
RBM22	1	LBK1	20	11	SP22	22-29	40	SA22	24-32	40	30	CC09/M4/T15	0.09							
RBM27							50			50	40		0.18							
RBM35							65			65	50		0.38							
RBM45							80			80	70		0.72							
RBM55							LBK5			50	28		SP55	55-80	85	SA55	60-84	85	60	1.14
															95			SA68	78-115	95
	SA100	110-164	1.32																	
RBM68	LBK6	63	36	SP68	68-104	100	SA68	78-115	100	75	2.10									
											140	CB150	RCM100	SA100	110-164	125	100	2.20		
																		3.08		

※ CB150為轉接板。 ※ RCM100為平衡塊。 ※ RBM搪頭標配為正搪SP刀片座，反搪SA刀片座為選配。
 ※ 另有CB200轉接板，加工範圍 $\phi 200 \sim \phi 254$ mm。 ※ 另有CB250轉接板，加工範圍 $\phi 250 \sim \phi 304$ mm。
 ※ CB150: Adapter plate. ※ RCM100: Balance base ※ Standard parts of SP cutting insert holder for RBM boring head; option of SA reverse cutting insert holder.
 ※ Attached with CB200 adapter plate, working range from $\phi 200 \sim \phi 254$ mm on diameter.
 ※ Attached with CB250 adapter plate, working range from $\phi 250 \sim \phi 354$ mm on diameter.



RBM可調式單刃粗搪反搪孔刀+LBK刀柄

Indexable RBM Single-Bit Rough Reverse Boring Head + LBK Shank (MAS 403BT)

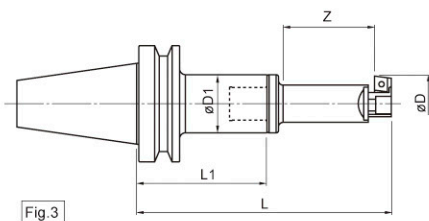
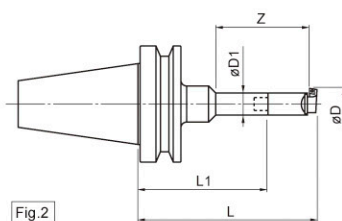
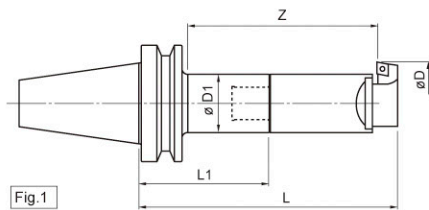


規格 Specifications:

組合規格 Tools Connection		樣式 Fig	搪孔範圍 Boring Ranges ϕD (mm)	有效長 Z (mm)	總長 Length L (mm)	刀桿長 L1 (mm)	刀桿外徑 $\phi D1$ (mm)	重量 (kg) Weight
搪頭型號 Type	刀桿 LBK Shank							
RBM18A-SA18	BT50-LBK2-125	3	20-25	40	185	125	39/24	4.00
RBM18B-SA18				65	210			4.04
RBM22-SA22	BT50-LBK1-115	2	24-32	70	155	115	31/19	4.09
RBM27-SA27	BT50-LBK2-125		31-41	105	175	125	39/24	4.08
RBM35-SA35	BT50-LBK3-125	1	38-52	130	190	125	31	4.48
RBM45-SA45	BT50-LBK4-115		50-65	140	195	115	39	5.02
	BT50-LBK4-145			170	225	145		5.12
RBM55-SA55	BT50-LBK5-105		60-84	120	190	105	50	5.64
	BT50-LBK5-180			195	265	180		6.64
RBM55-SA68	BT50-LBK5-105		78-115	130	200	105		5.72
	BT50-LBK5-180			205	275	180		6.72
RBM55-SA100	BT50-LBK5-105		110-164	130	200	105		5.82
	BT50-LBK5-180			205	275	180		6.82
RBM68-SA68	BT50-LBK6-95		78-115	125	195	95		64
	BT50-LBK6-170	200		270	170	8.40		
	BT50-LBK6-230	260		330	230	9.70		
	BT50-LBK6-290	320		390	290	11.10		
	BT50-LBK6-350	2		< $\phi 90=260$ > $\phi 90=380$	450	350	90/64	
RBM68-SA100	BT50-LBK6-95	1	110-164	125	195	95	64	6.70
	BT50-LBK6-170			200	270	170		8.50
	BT50-LBK6-230			260	330	230		9.80
	BT50-LBK6-290			320	390	290		11.20
	BT50-LBK6-350	2	380	450	350	90/64	15.70	
RBM68-CB150-RCM100-SA100	BT50-LBK6-95	1	160-214	150	220	95	64	7.58
	BT50-LBK6-170			225	295	170		9.38
	BT50-LBK6-230			280	355	230		10.68
	BT50-LBK6-290			345	415	290		12.08
	BT50-LBK6-350	2	405	475	350	90/64	16.58	

RBM可調式單刃粗搪反搪孔刀+LBK刀柄 (MAS 403BT)

Indexable RBM Single-Bit Rough Reverse Boring Head + LBK Shank (MAS 403BT)



規格 Specifications:

組合規格 Tools Connection		樣式 Fig	搪孔範圍 Boring Ranges øD(mm)	有效長 Z (mm)	總長 Length L (mm)	刀桿長 L1 (mm)	刀桿外徑 øD1 (mm)	重量 (kg) Weight
搪頭型號 Type	刀桿 LBK Shank							
RBM18A-SA18	BT30-LBK2-80	3	20-25	40	140	80	24	0.70
RBM18B-SA18				65	165			0.74
RBM22-SA22	BT30-LBK1-70	1	24-32	70	110	70	19	0.59
RBM27-SA27	BT30-LBK2-80		31-41	90	130	80	24	0.78
RBM35-SA35	BT30-LBK3-80		38-52	100	145	60	31	1.08
RBM45-SA45	BT30-LBK4-70		50-65	110	150		39	1.52
RBM55-SA55	BT30-LBK5-60		60-84	90	145		50	1.94
RBM68-SA68	BT30-LBK6-60		78-115	105	160	64	3.10	
RBM18A-SA18	BT40-LBK2-85		3	20-25	40	145	85	24
RBM18B-SA18		65			170	1.24		
RBM22-SA22	BT40-LBK1-75	1	24-32	70	115	75	19	1.09
	BT40-LBK1-90			85	130	90		1.15
RBM27-SA27	BT40-LBK2-85		31-41	90	135	85	24	1.28
	BT40-LBK2-100			105	150	100		1.33
RBM35-SA35	BT40-LBK3-95		38-52	110	160	95	31	1.58
	BT40-LBK3-125			140	190	125		1.88
RBM45-SA45	BT40-LBK4-85		50-65	120	165	85	39	2.02
	BT40-LBK4-130	165		210	130	2.62		
RBM55-SA55	BT40-LBK5-75	60-84	100	160	75	50	2.44	
	BT40-LBK5-125		150	210	125		3.44	
RBM55-SA68	BT40-LBK5-75	78-115	110	170	75		2.52	
	BT40-LBK5-125		160	220	125		3.52	
RBM55-SA100	BT40-LBK5-75	110-164	110	170	75		2.62	
	BT40-LBK5-125		160	220	125		3.62	
RBM68-SA68	BT40-LBK6-65	78-115	105	165	65		64	3.40
	BT40-LBK6-115		155	215	115	4.80		
	BT40-LBK6-165		205	265	165	6.00		
RBM68-SA100	BT40-LBK6-65	110-164	105	165	65	3.50		
	BT40-LBK6-115		155	215	115	4.90		
	BT40-LBK6-165		205	265	165	6.10		
RBM68-CB150-RCM100-SA100	BT40-LBK6-65	160-214	130	190	65	4.38		
	BT40-LBK6-115		180	240	115	5.78		
	BT40-LBK6-165		230	290	165	6.98		

★紅字標示為高長徑比，需使用刀尖R0.2刀片，並降低轉速與進給。★The red font are in high times depth boring, please use tip R0.2 insert for machining, also reduce speed and feed.